

Customer Information Sheet

DRAWING No.: S0941-46R

IF IN DOUBT - ASK

©

NOT TO SCALE

THIRD ANGLE PROJECTION

ALL DIMENSIONS IN mm

SPECIFICATION:

MATERIAL:
CONTACT = STAINLESS STEEL, 0.15mm THICK

FINISH:
1.0µm - 3.0µm TIN OVER 0.4µm - 1.5µm NICKEL

ELECTRICAL:
RESISTANCE = 100mΩ MAX

MECHANICAL:
INSERTION FORCE = 9.8N MAX
WITHDRAWAL FORCE = 0.69N MIN

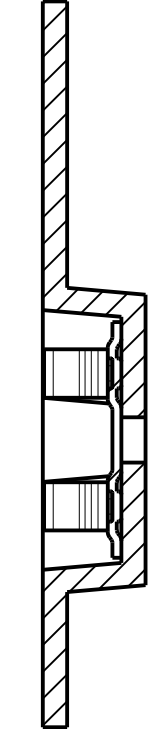
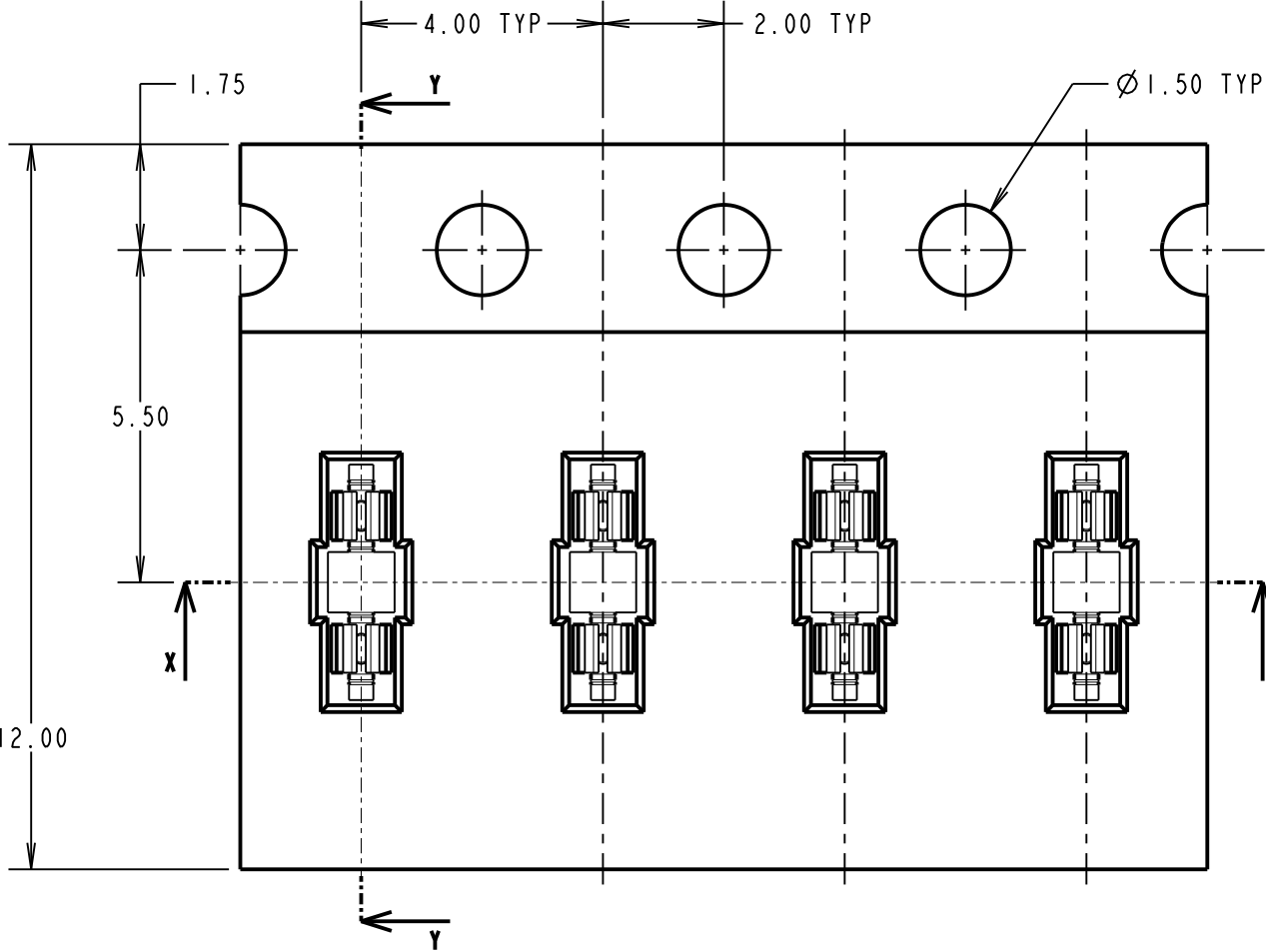
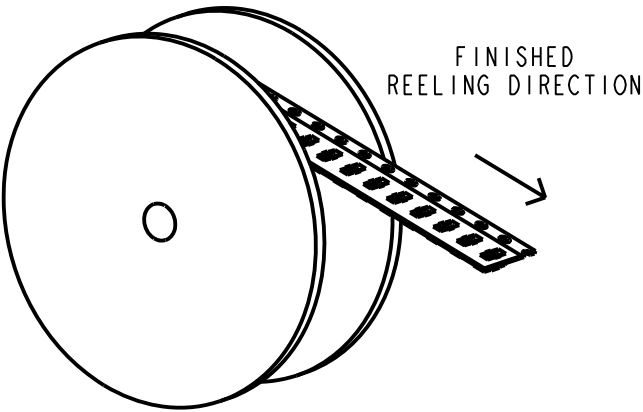
ENVIRONMENTAL:
OPERATING TEMPERATURE = -40°C TO +85°C
STORAGE TEMPERATURE = -40°C TO +85°C

SOLDERING DATA:
SOLDERING HEAT RESISTANCE = 250°C FOR 5 SECONDS

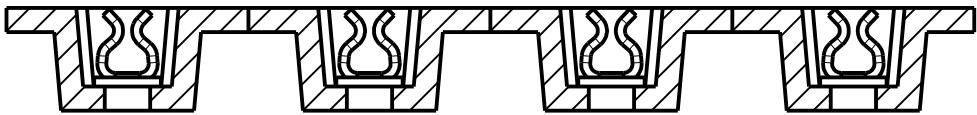
NOTES:

1. FOR USE WITH 0.15+0.01/-0.015mm THICK SHIELD CANS.

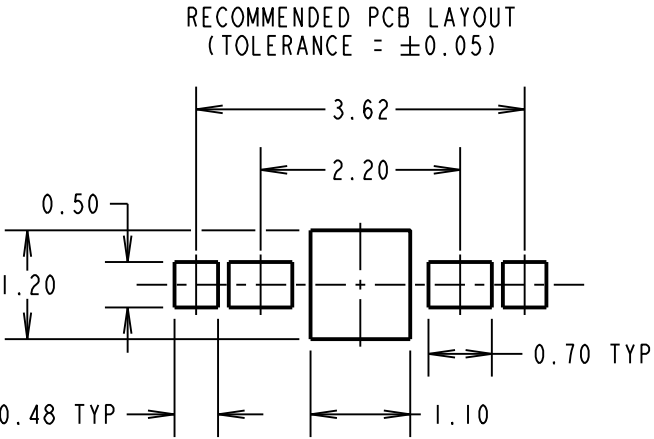
2. QUANTITY PER REEL = 10,000.



SECTION Y-Y

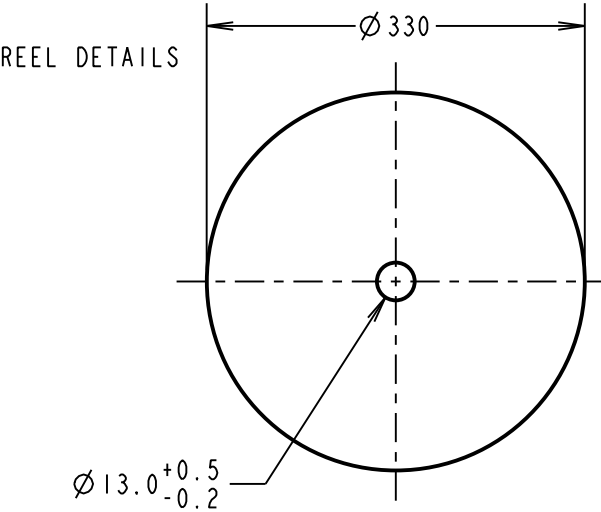
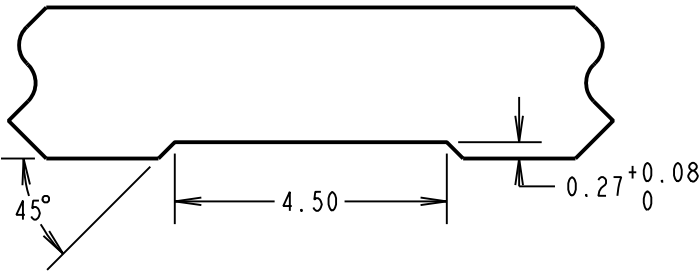


SECTION X-X

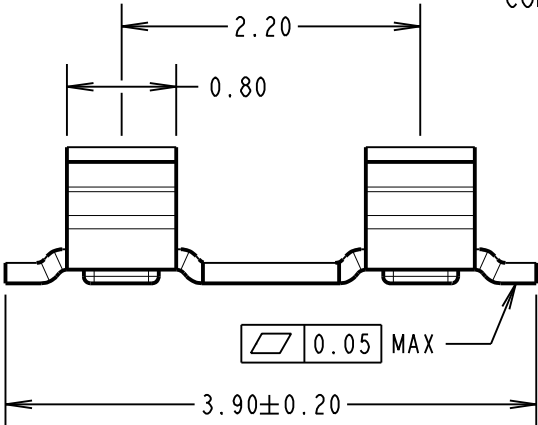
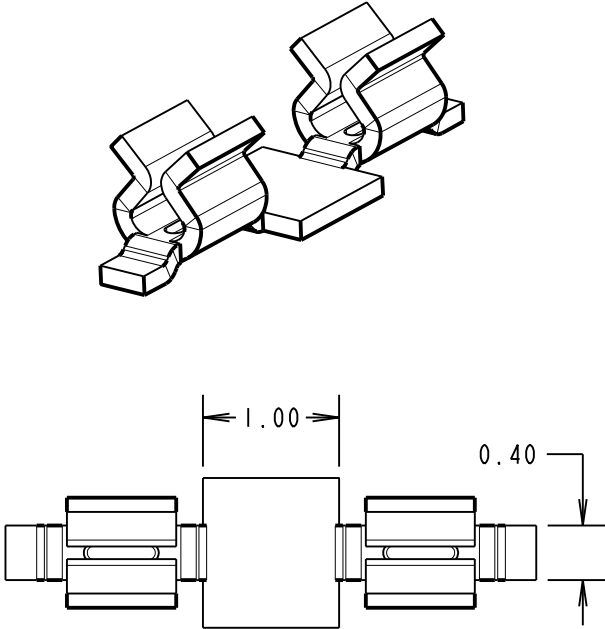


RECOMMENDED PCB LAYOUT
(TOLERANCE = ±0.05)

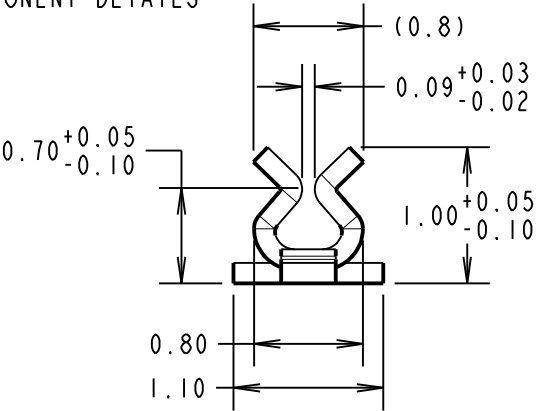
RECOMMENDED SHIELD
CAN CUT OUT



REEL DETAILS



COMPONENT DETAILS



HARWIN

www.harwin.com
technical@harwin.com

THIS DRAWING AND ANY
INFORMATION OR DESCRIPTIVE
MATTER SET OUT HEREON ARE
CONFIDENTIAL AND COPYRIGHT
PROPERTY OF THE HARWIN
GROUP AND MUST NOT BE
DISCLOSED, LOANED, COPIED
OR USED FOR MANUFACTURING,
TENDERING OR FOR ANY
OTHER PURPOSE WITHOUT
THEIR WRITTEN PERMISSION.

TOLERANCES
X. = ±1mm
X.X = ±0.50mm
X.XX = ±0.20mm
X.XXX = ±0.01mm
ANGLES = ±5°
UNLESS STATED

MATERIAL:

SEE ABOVE

FINISH:

SEE ABOVE

S/AREA:

mm²

TITLE:

SMT RFI SHIELD CLIP
IN TAPE AND REEL

DRAWING NUMBER:

S0941-46R

SHT

2 OF 2

MGP	4	20.01.20	22153
NAME	ISS.	DATE	C/NOTE
APPROVED: MGP			
CHECKED: RP			
DRAWN: S.BENNETT			
CUSTOMER REF.:			
ASSEMBLY DRG:			

Mouser Electronics

Authorized Distributor

Click to View Pricing, Inventory, Delivery & Lifecycle Information:

Harwin:

S0941-46R